



### **Idea Plan Feed Carts**

**No. IP 770-30**

This Idea Plan is intended to provide educational information and ideas concerning various methods for building manual feed carts. The following attached drawings are based on historical plans and may not meet design and construction standards for your area:

Feed Cart (PSU 329)

Feed Cart (USDA 6343)

The Department of Agricultural and Biological Engineering at Penn State has a variety of educational material available related to agricultural and biological engineering. This material is intended to help Pennsylvania farmers and others develop buildings and facilities for modern, environmentally-compatible farm facilities. The material can be used in conjunction with county extension staff, builders, suppliers, consulting engineers, the Natural Resources Conservation Service, financial management advisors, farm lenders, veterinarians, and others to assemble a facilities plan suitable for local conditions.

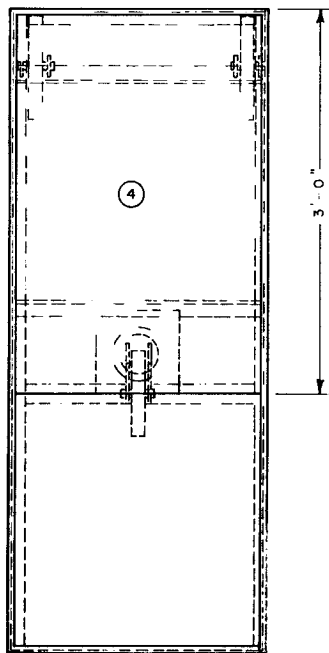
Publications are available in the areas of agricultural safety and health, animal housing systems, building and farmstead planning, crops and greenhouses, machinery systems and tractors, residential housing, soil and water resources, and solid waste management. Contact your county Penn State Extension Office for more information on these subjects. You can also obtain an index of publications concerning the above areas by calling, writing, faxing or e-mailing:

Department of Agricultural and Biological Engineering  
246 Agricultural Engineering Building  
University Park, PA, 16802-1909  
Telephone: 814-865-7685  
Fax: 814-863-1031  
E-mail: [agbioeng@psupen.psu.edu](mailto:agbioeng@psupen.psu.edu).

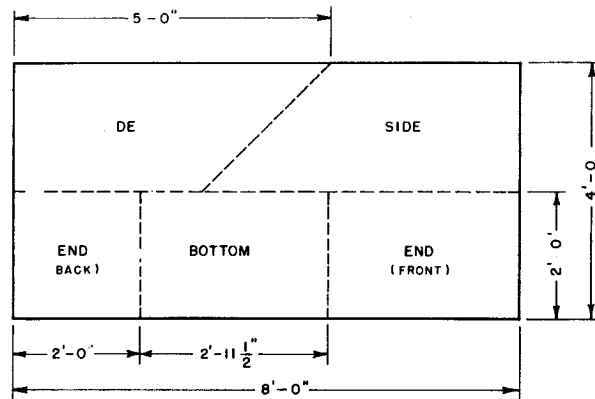
---

This publication is available in alternative media on request.

The Pennsylvania State University is committed to the policy that all persons shall have equal access to programs, facilities, admission, and employment without regard to personal characteristics not related to ability, performance, or qualifications as determined by University policy or by state or federal authorities. The Pennsylvania State University does not discriminate against any person because of age, ancestry, color, disability or handicap, national origin, race, religious creed, sex, sexual orientation, or veteran status. Direct all inquiries regarding the nondiscrimination policy to the Affirmative Action Director, The Pennsylvania State University, 201 Willard Building, University Park, PA 16802-2801; tel. (814) 863-0471; TDD (814) 865-3175.

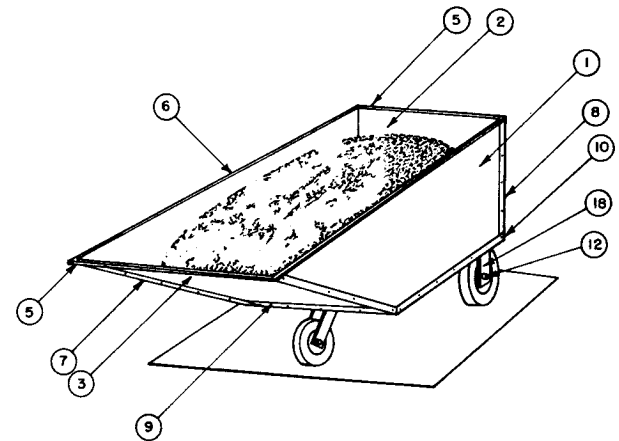


TOP VIEW

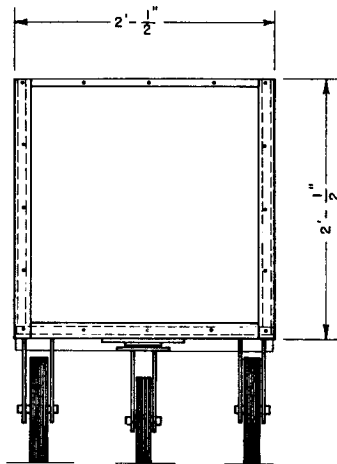


PANEL LAYOUT DETAIL

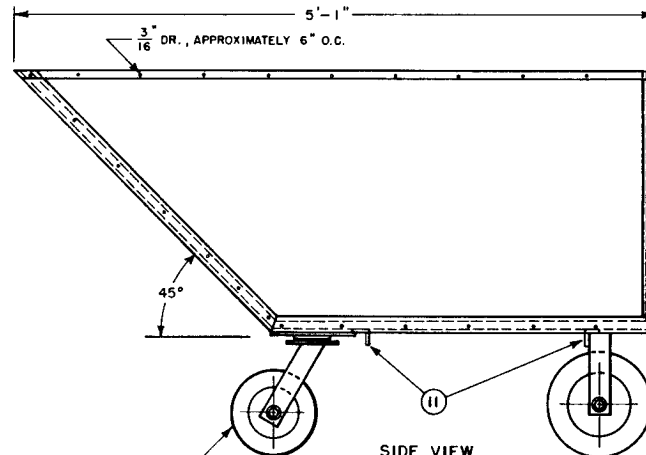
ONE SHEET 1/2" x 4'-0" x 8'-0" AC EXTERIOR PLYWOOD



PERSPECTIVE



FRONT VIEW



SIDE VIEW

OPTIONAL, COMMERCIAL CASTER WHEEL OR FOLLOW PLAN FOR CASTER WHEEL, DEPT. OF AG. ENG. AND DEPT. OF AG. ED., THE PENNSYLVANIA STATE UNIVERSITY

### LIST OF MATERIALS

NO.	NAME	PCS. REQ'D	DESCRIPTION	MATERIAL
1	SIDE	2	1/2" x 2'-0" x 3'-0" x 5'-0"	AC EXT. PLYWOOD
2	BACK	1	1/2" x 2'-0" x 2'-0"	AC EXT. PLYWOOD
3	FRONT	1	1/2" x 2'-0" x 2'-9-3/4"	AC EXT. PLYWOOD
4	BOTTOM	1	1/2" x 2'-0" x 2'-11-1/2"	AC EXT. PLYWOOD
5	TOP END BRACE	2	1/8" x 1/2" x 1/2" x 2'-1"	ANGLE IRON
6	TOP SIDE BRACE	2	1/8" x 1/2" x 1/2" x 5'-1"	ANGLE IRON
7	FRONT END BRACE	2	1/8" x 1-1/2" x 1-1/2" x 2'-11"	ANGLE IRON
8	BACK END BRACE	2	1/8" x 1-1/2" x 1-1/2" x 1'-11"	ANGLE IRON
9	BOTTOM END BRACE	2	1/8" x 1-1/2" x 1-1/2" x 2'-0"	ANGLE IRON
10	BOT SIDE BRACE	2	1/8" x 1-1/2" x 1-1/2" x 3'-1"	ANGLE IRON
11	WHEEL BRACE	2	1/8" x 1-1/2" x 1-1/2" x 2'-0"	ANGLE IRON
12	AXLE	2	5/8" D x 3-1/2"	C.R. STEEL
13	WASHER	4	5/8"	FLAT WASHER
14	COTTER PIN	4	3/32" x 1-1/2"	COTTER PIN
15	BOLTS	APPX. 86	3/16" x 3/4" FH x LK. WASHER	STOVE BOLTS
16	REAR WHEELS	2	10 x 2.75 (TIRE SIZE)	HARD RUBBER
17	CASTER WHEEL	1	8" (SEE SIDE VIEW)	HARD RUBBER
18	WHEEL STRUT	4	1/4" x 2" x 7-1/2"	FLAT IRON

THE PENNSYLVANIA STATE UNIVERSITY  
DEPT. OF AG. ENG. AND DEPT. OF AG. ED.

### FEED CART

DRAWN BY: G. R. K.  
DES'D: O. A. K. & J. D. G.  
DATE: 12/30/65

SHEET 1 OF 1



