



Agricultural Hand Signals

Steven R. Johnson, Graduate Assistant
 Dennis J. Murphy, Professor, Agricultural and Biological Engineering

Know your hand signals! Quite often communication on the farm can not be accomplished vocally due to noise or distance. For this reason, standardized hand signals for agriculture have been developed by the American Society of Agricultural Engineers. These hand signals were developed to provide an easy means of communication, particularly in the interest of safety. Often times a farmer may only have the use of one arm. All but one of the hand signals require only one arm. For this reason, the standardized hand signals are very effective if one arm is incapacitated by machinery or used for grasping. Hand signals can save time and prevent mistakes. Use hand signals and teach them to others. Help make farming a safer occupation.



Fig 1. **THIS FAR TO GO.** Place palms at ear level facing head and move laterally inward to indicate remaining distance to go.



Fig 2. **COME TO ME.** Raise the arm vertically overhead, palm to the front, and rotate in large horizontal circles.



Fig 3. **MOVE TOWARD ME-FOLLOW ME.** Point toward person(s), vehicle(s), unit(s), beckon by holding the arm horizontally to the front, palm up, and motioning toward the body.



Fig 4. **MOVE OUT-TAKE OFF.** Face the desired direction of movement; hold the arm extended to the rear; then swing it overhead and forward in the direction of desired movement until it is horizontal, palm down.



Fig 5. **STOP.** Raise hand upward to the full extent of the arm, palm to the front. Hold that position until the signal is understood.



Fig 6. **SPEED IT UP-INCREASE SPEED.** Raise the hand to the shoulder, fist closed, thrust the fist upward to the full extent of the arm and back to the shoulder rapidly several times.

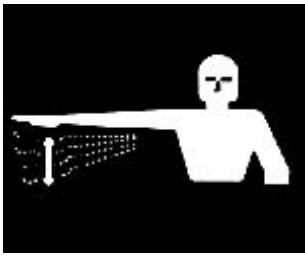


Fig 7. SLOW IT DOWN - DECREASE SPEED. Extend the arm horizontally sideward, palm down, and wave arm downward 45 degree minimum several times keepign the arm straight. Do not move arm above horizontal.



Fig 8. START THE ENGINE. Simulate cranking of vehicles by moving arm in a circular motion at waist level.

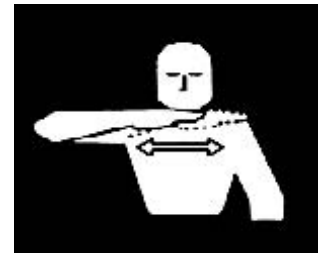


Fig 9. STOP THE ENGINE. Draw right hand, palm down, across the neck in a "throat cutting" motion from left to right.

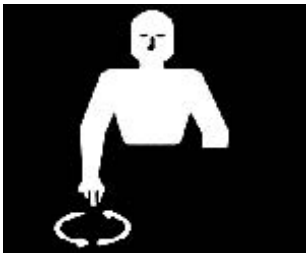


Fig 10. LOWER EQUIPMENT. Make circular motion with either hand pointing to the ground.



Fig 11. RAISE EQUIPMENT. Make circular motion with either hand at head level.

For more information on agricultural safety, visit our website:
www.agsafety.psu.edu

revised 06/08

The Pennsylvania State University is committed to the policy that all persons shall have equal access to programs, facilities, admission, and employment without regard to personal characteristics not related to ability, performance, or qualifications as determined by University policy or by state or federal authorities. It is the policy of the University to maintain an academic and work environment free of discrimination, including harassment. The Pennsylvania State University prohibits discrimination and harassment against any person because of age, ancestry, color, disability or handicap, national origin, race, religious creed, sex, sexual orientation, or veteran status. Discrimination or harassment against faculty, staff, or students will not be tolerated at The Pennsylvania State University. Direct all inquiries regarding the nondiscrimination policy to the Affirmative Action Director, The Pennsylvania State University, 328 Boucke Building, University Park, PA 16802-5901, Tel 814-865-4700/V, 814-863-1150/TTY.